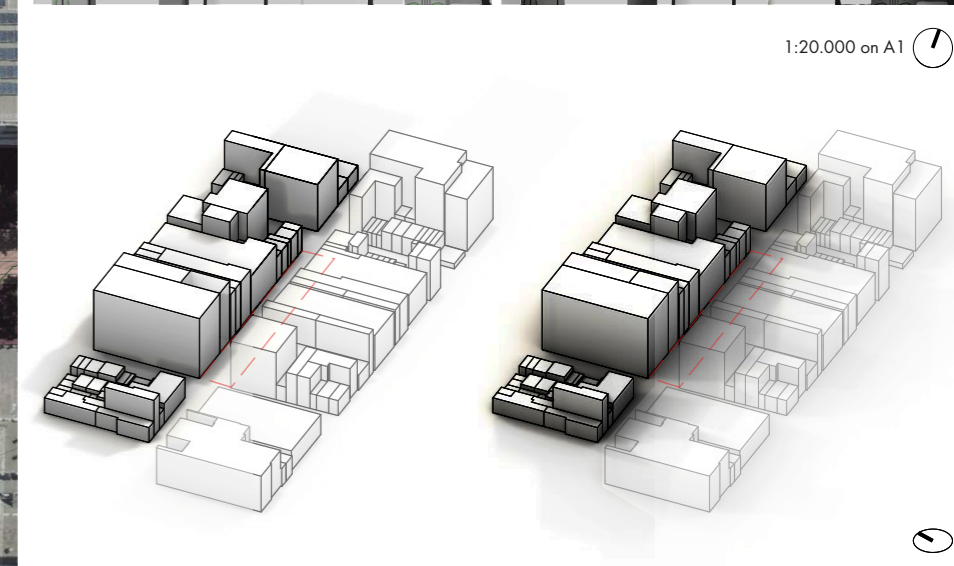


1:20,000 on A1

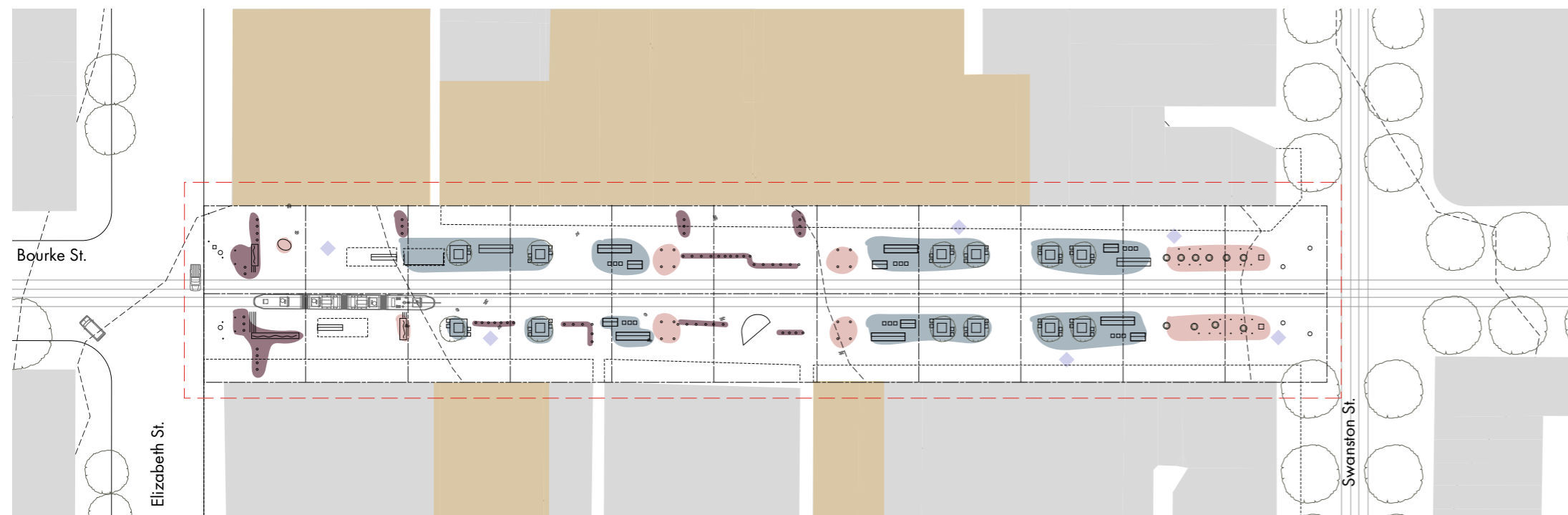


TRANSPORT USERS  
(layered by rights of way)

- Car
- Bicycle
- Pedestrian
- Tram

SHADOW ANALYSIS (summer equinox)

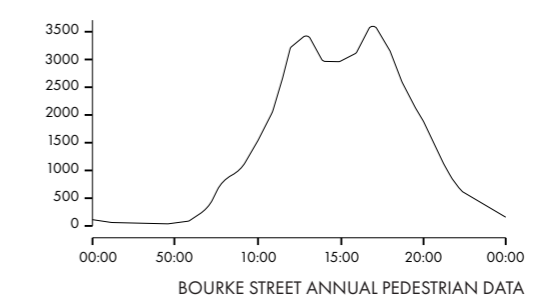
SHADOW ANALYSIS (winter equinox)



SITE FEATURES

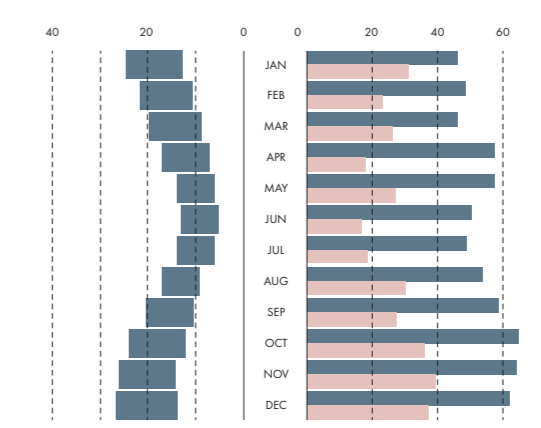
- - - Design Area
- Vegetation
- Amenity
- Heritage
- Defensive
- Art
- Performance
- - - Canopy
- - - Established Grid
- - - Contour line (1m)

1:750 on A1



**3500 +**  
average users  
during peak hours

shading reaches  
**80%**  
during the wettest  
and coldest weather



AVG TEMP (°C) & RAINFALL AVG + DAYLIGHT (mm)

Intersection of  
multiple means of  
transport



Scattered elements of  
urban furnitures and no  
consideration of the  
living systems

# THE GREEN STITCH

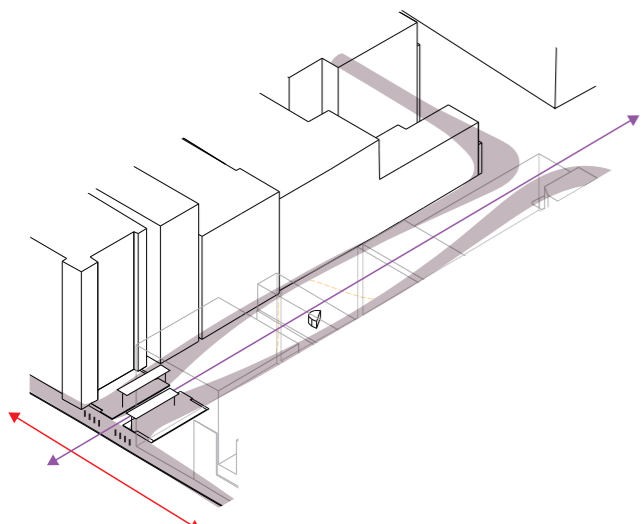
## INTENT

The analysis of the site has revealed that the site is in a messy state where the street life and its elements are not conversing.

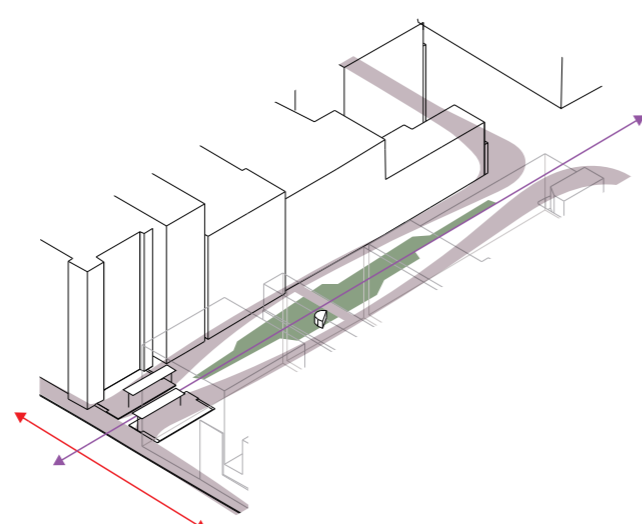
This project will stitch Bourke St. together by injecting a green space into the street; creating a coherent and iconic street whilst acknowledging its complexity, from celebrating the streetscape to addressing the concern of safety.

Thus, the Green Stitch can become Melbourne's future street typology. Streets that protects both people and living systems.

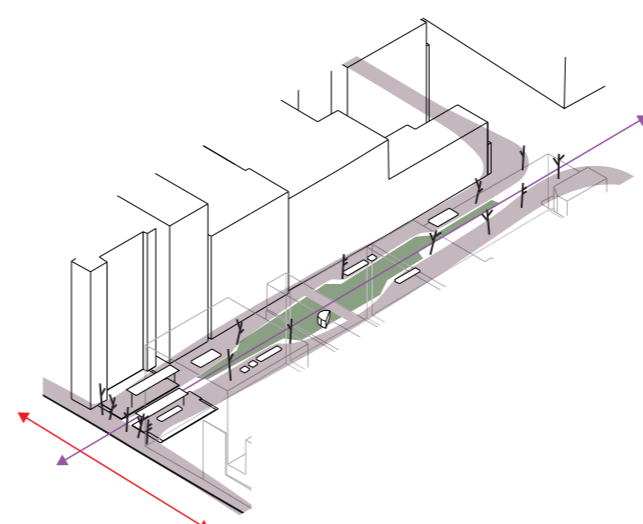




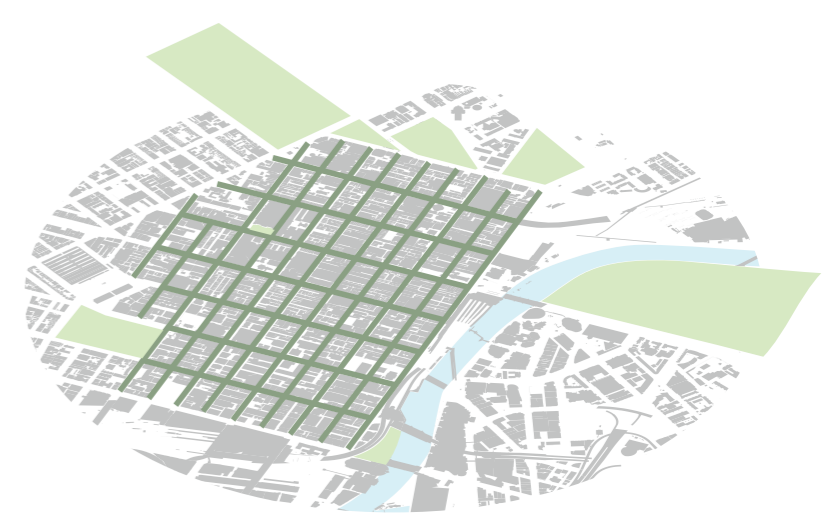
Initial condition



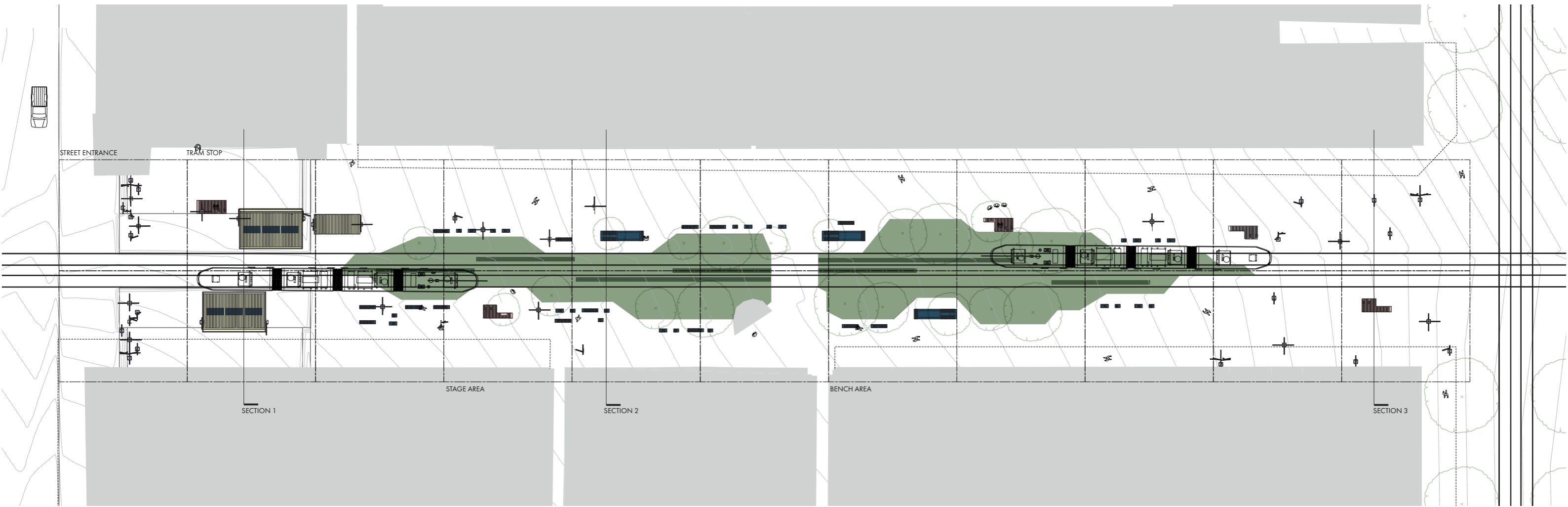
Insertion of green space to stitch the disconnect



Insertion of furnitures



Expanding the typology to Melbourne steets



- Design Area
- Contour line (100m)
- Canopy
- Established Grid
- Canopy
- Seaters
- Platform
- Bollard

● Vegetation

*Atriplex semibaccata*  
*Bothriochloa macra*  
*Dichondra repens*  
*Microlaena stipoides*  
*Rytidosperma racemosum*  
*Themeda triandra*

Berry Saltbush  
 Red-leg Grass  
 Kidney Weed  
 Weeping Grass  
 Stiped Wallaby-grasses  
 Kangaroo Grass

● Raingarden

*Banksia integrifolia*  
*Carex appressa*  
*Eleocharis acuta*  
*Eleocharis sphacelata*  
*Poa labillardierei*

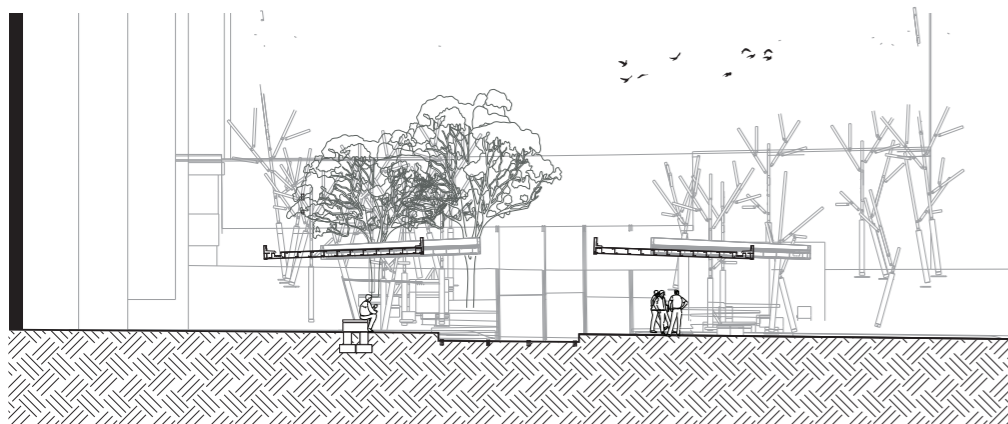
Coast Banksia  
 Tall Sedge  
 Common Spike Rush  
 Tall Spike Rush  
 Common Tussock-grass

○ Canopy

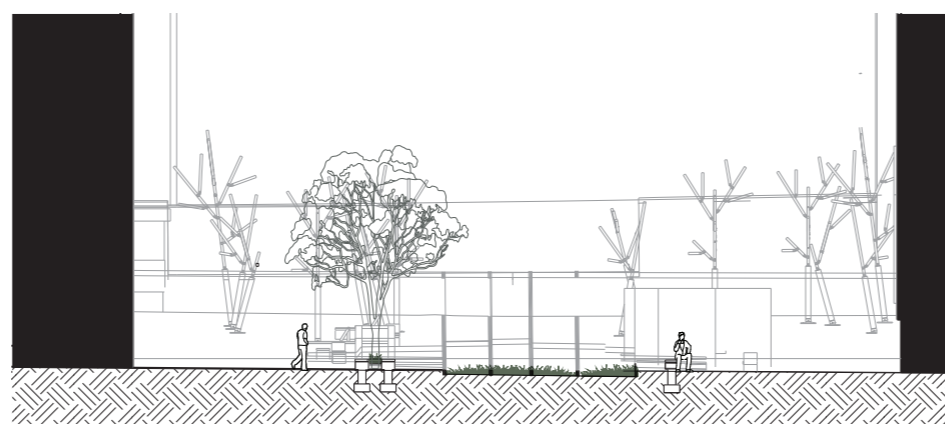
*Acacia implexa*  
*Acacia melanoxylon*  
*Allocasuarina verticillata*  
*Eucalyptus behriana*

Lightwood  
 Blackwood  
 Drooping Sheoak  
 Bull Mallee

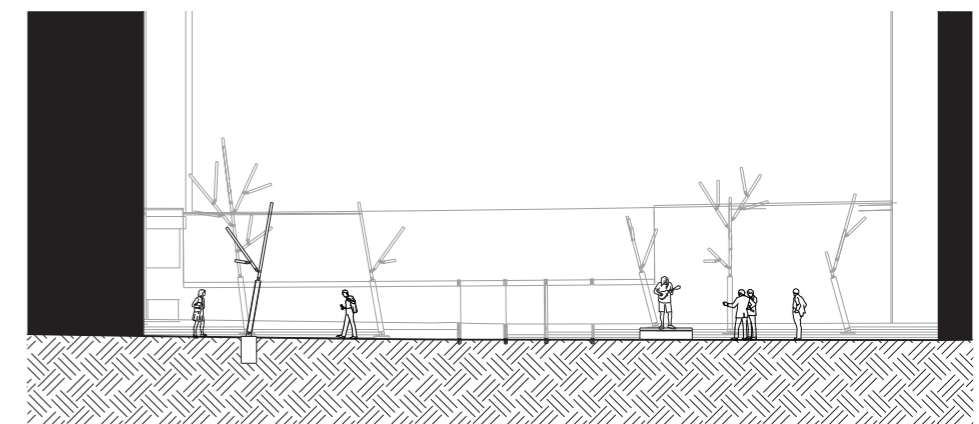
SITE FEATURES  
 1:10,000 @A1



SECTION 1



SECTION 2

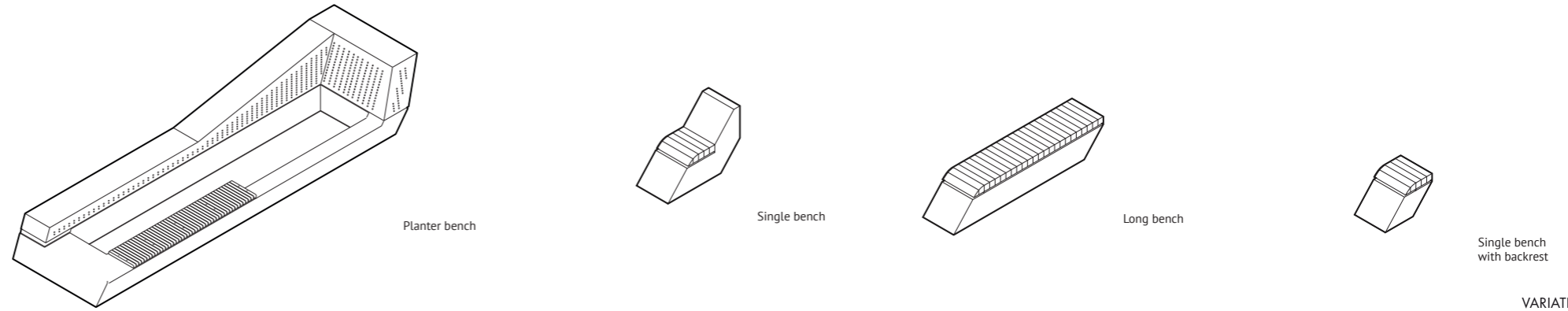


SECTION 3  
 1:200 on A1

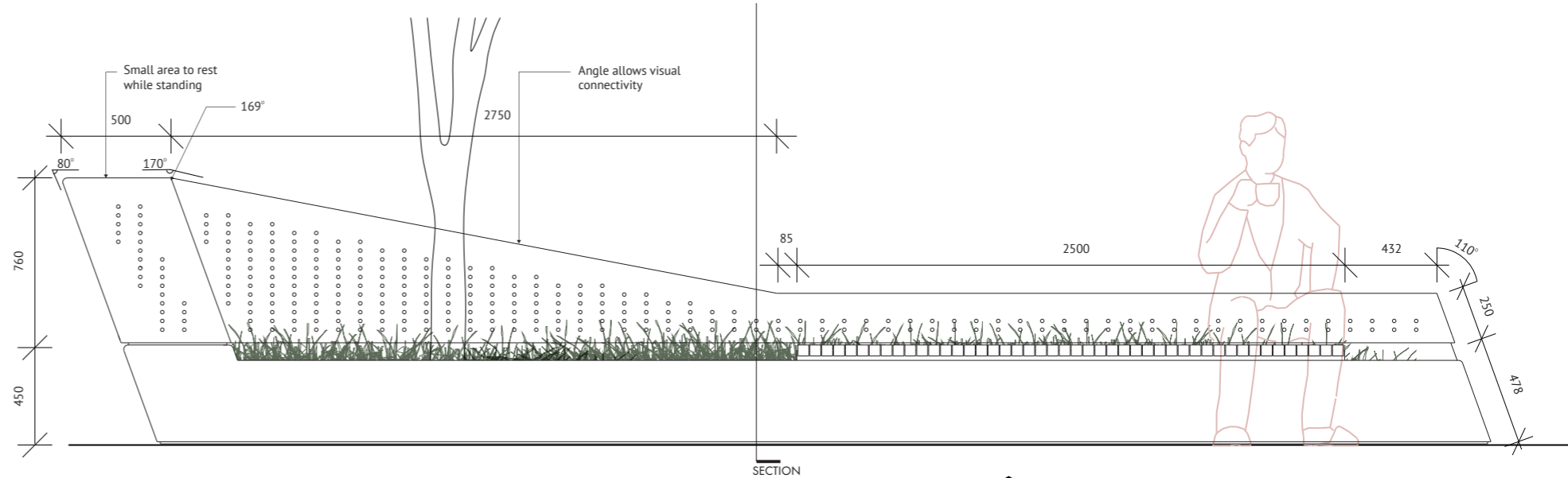
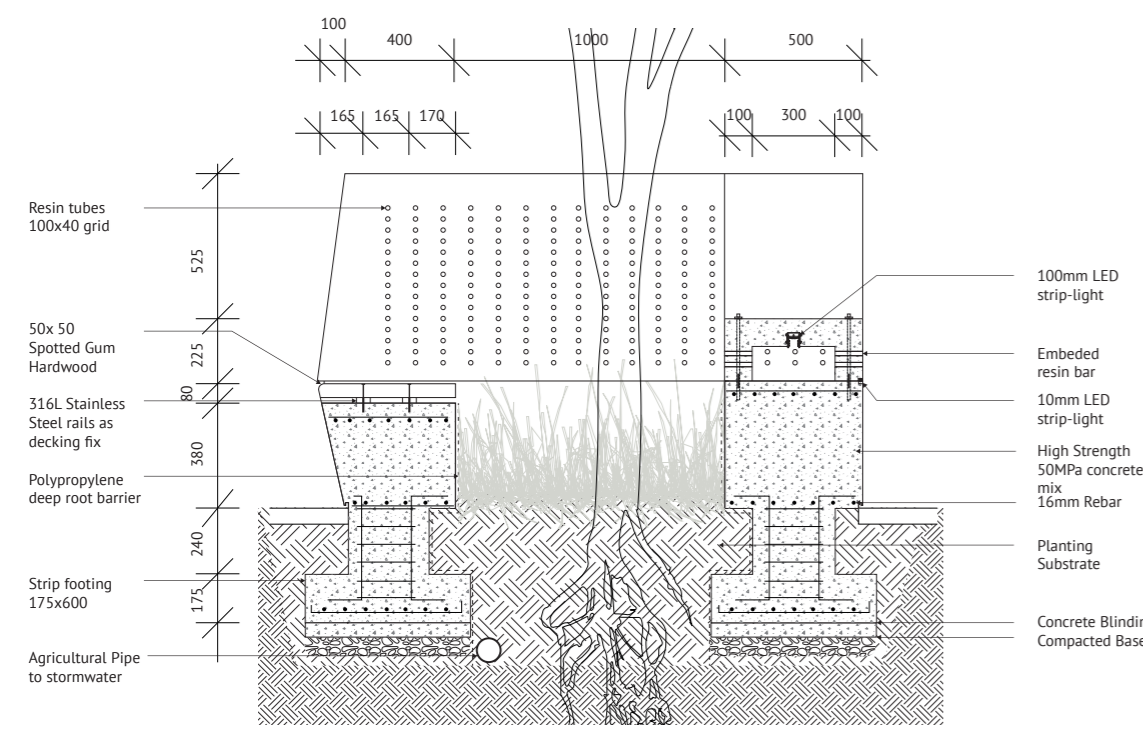
SPACE  
TYPOLOGY



# BENCH TYPOLOGY

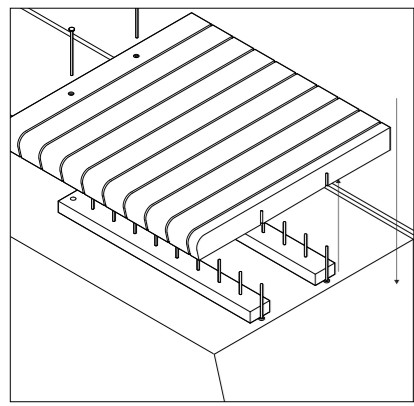


VARIATION  
1:100 on A1

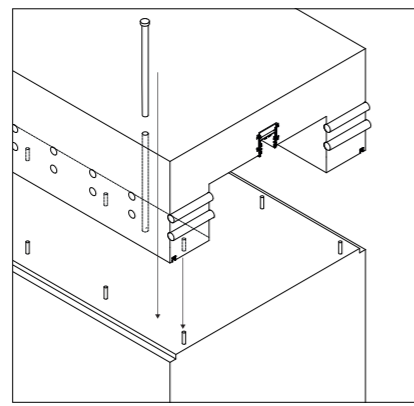


PLANTER BENCH ELEVATION  
1:20 on A1

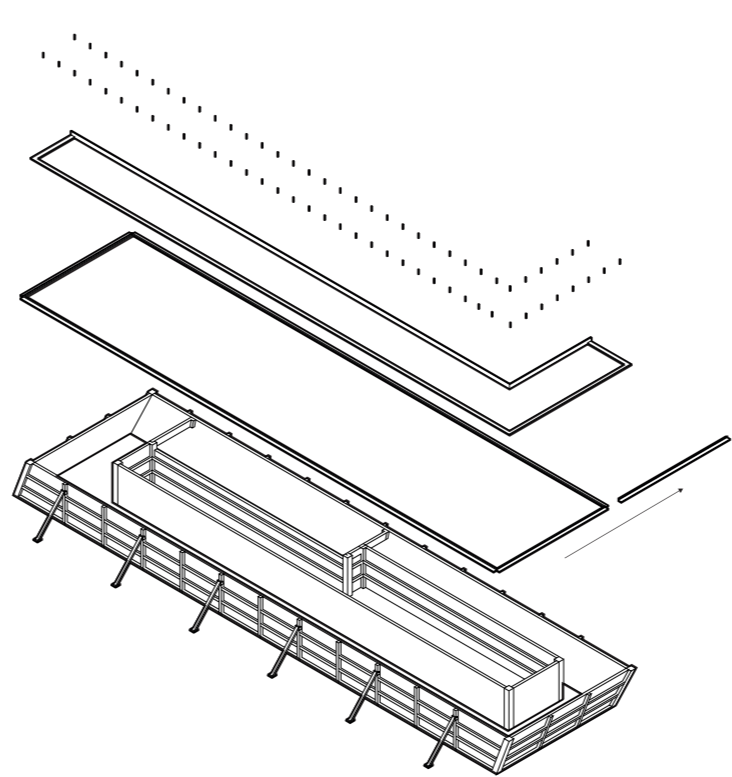
PLANTER BENCH SECTION  
1:20 on A1



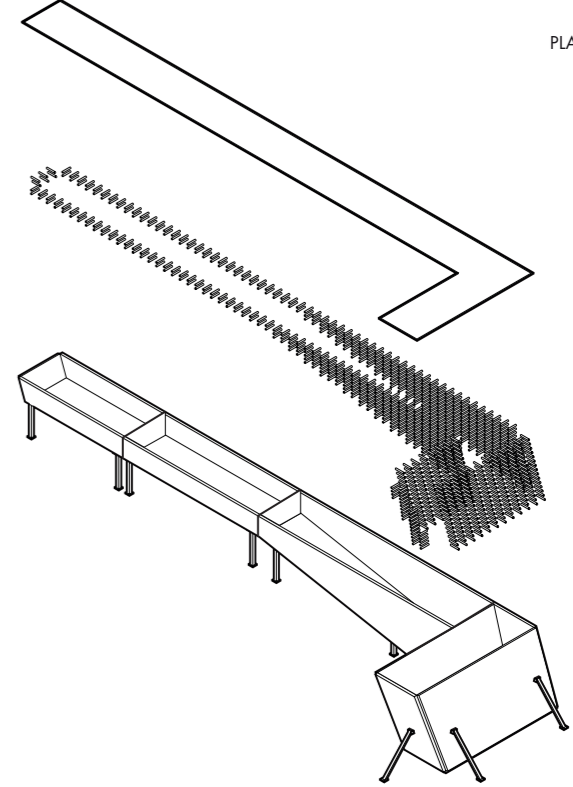
TIMBER SEATING TO CONCRETE CONNECTION  
1:10 on A1



TOP CONCRETE TO BOTTOM CONCRETE  
1:10 on A1

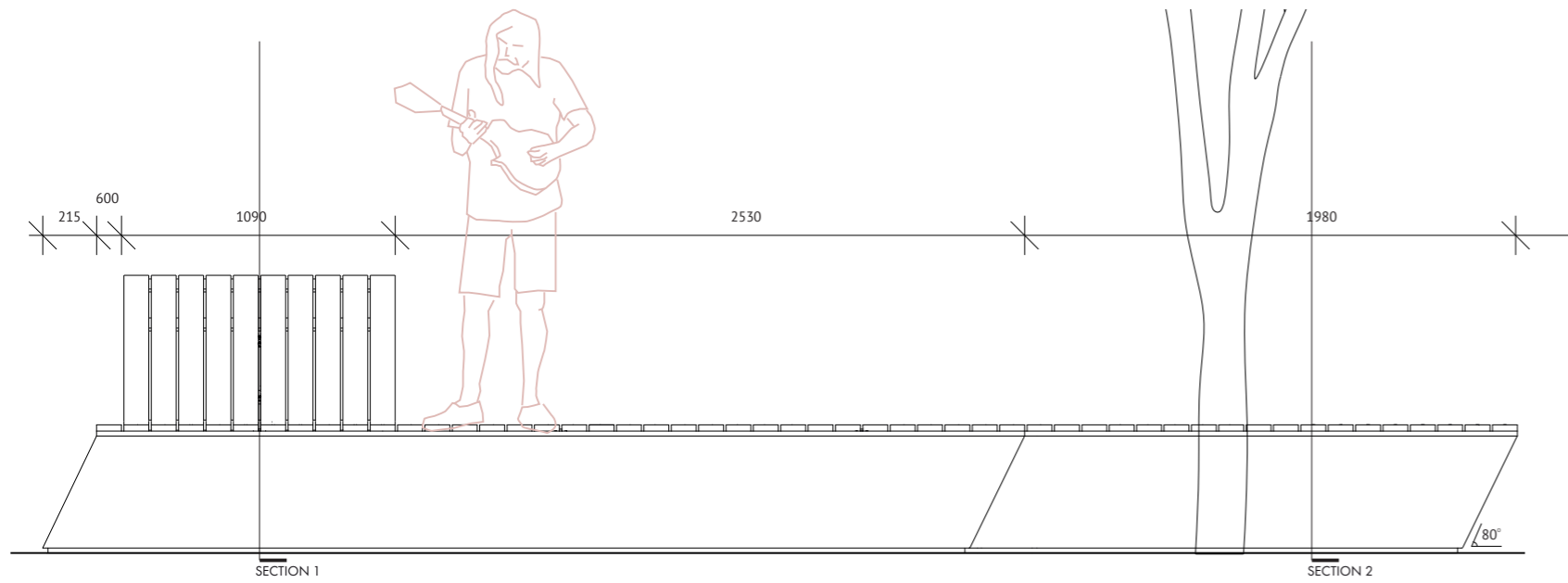


1. In-situ concrete casting, Chamfer Strips put in the edges to create 1 inch chamfer
2. Rubber joints are put in to be removed after concrete cures for LED strip installation
3. Dynabolt inserted after concrete is close to curing

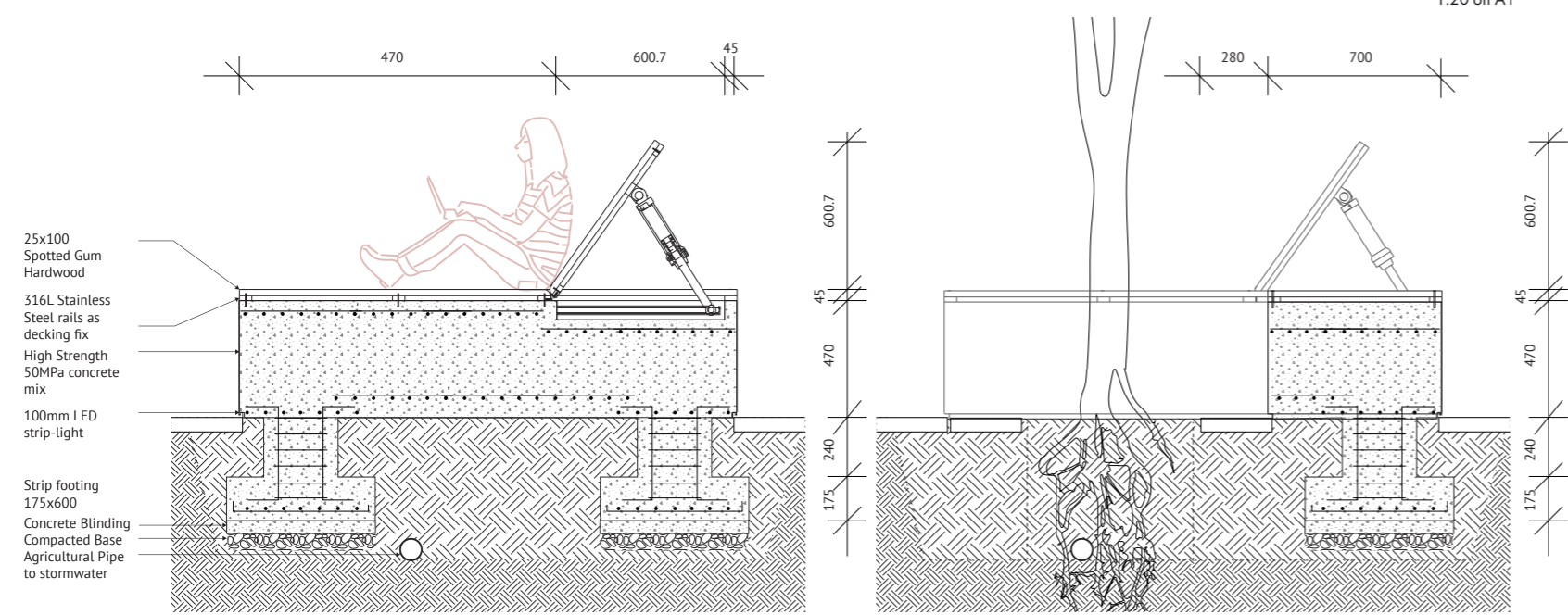


BENCH FORMWORK AND INSTALLATION  
1:50 on A1

# PLATFORM TYPOLOGY



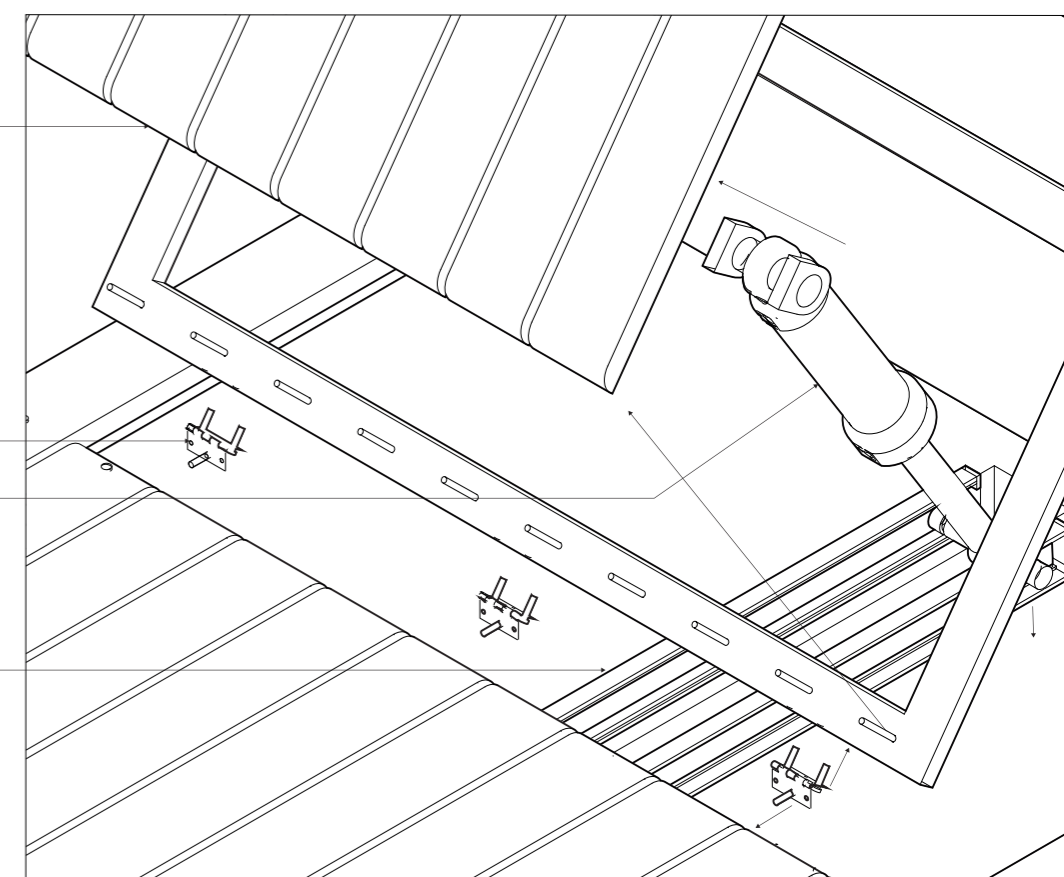
PLATFORM ELEVATION  
1:20 on A1



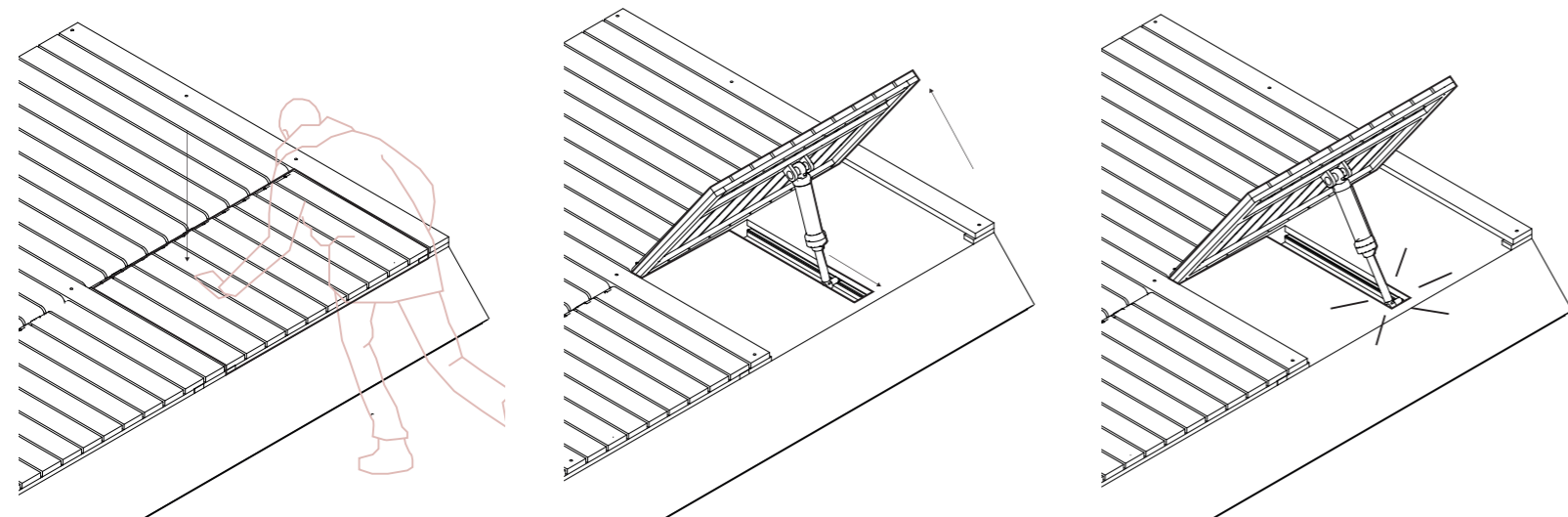
PLATFORM SECTION 1  
1:20 on A1

PLATFORM SECTION 2  
1:20 on A1

4. Timber deck installed with 5mm spacing then bolted into the steel frame
- 26mm Bevel is cut to allow hinge movement
- steel frame then bolted into concrete
3. Butt hinge connects to the steel support
2. 50mm hydraulic cylinder for back support hinge
1. 100x675x75mm negative space is to be detailed in formwork for sliding rails to be bolted in after concrete is casted

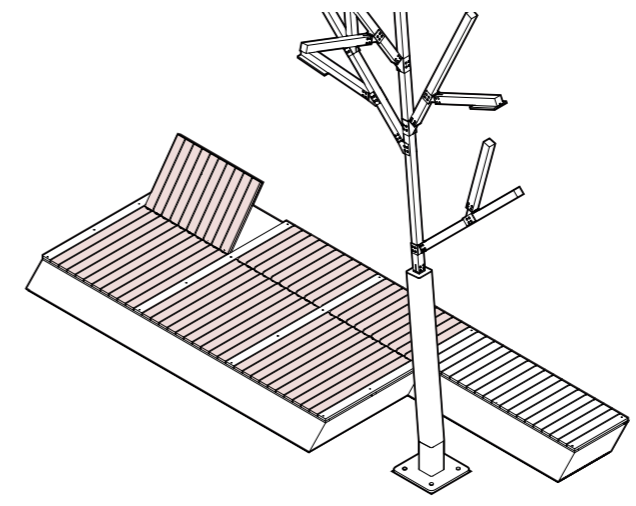


EXPLODED ASSEMBLY DETAIL  
1:5 on A1

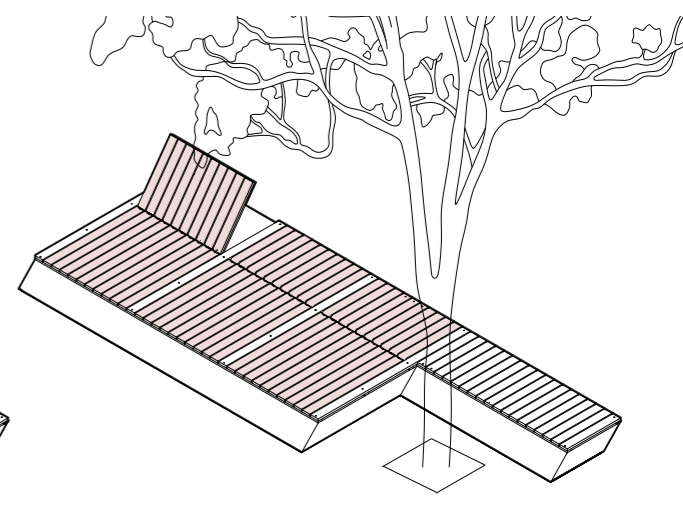


1. Push until a noticeable click is heard
2. Hydraulic Cylinder will slide back  
Keep hands clear until movement is complete
3. Once movement is complete a click will be heard  
To fold back into original position, a push with slight force is required

BACK MECHANISM  
1:20 on A1



Tree bollard can be integrated to the platform for night lamp for late performances

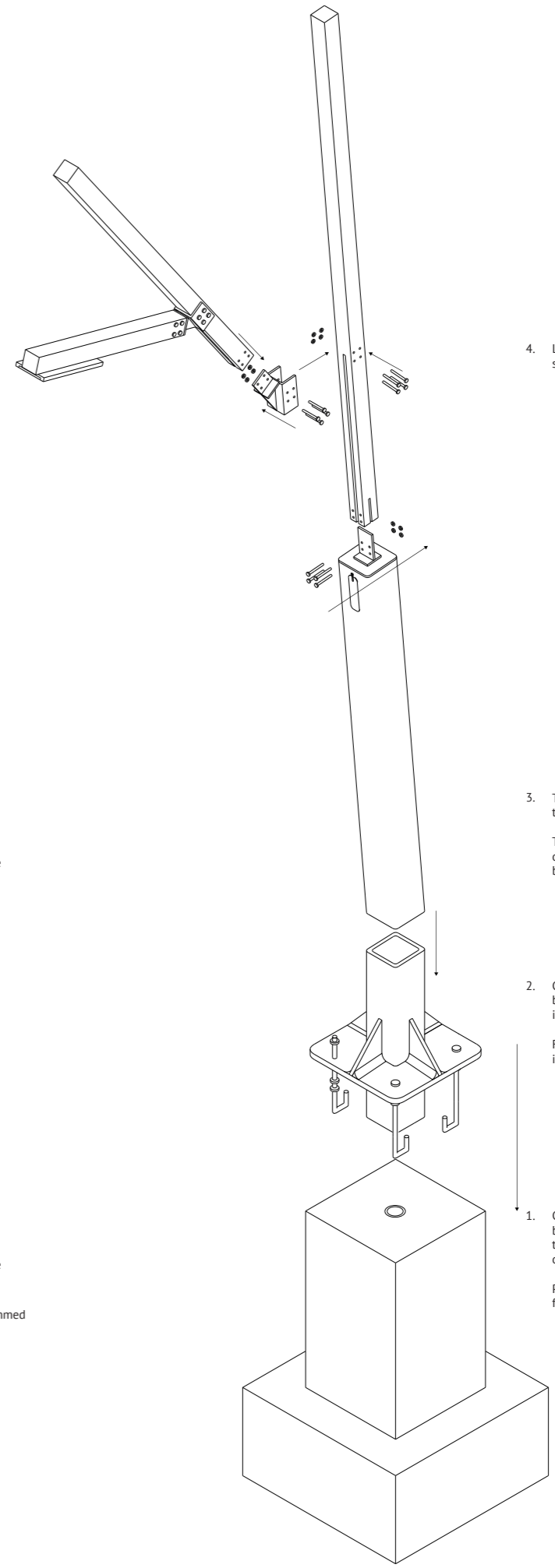
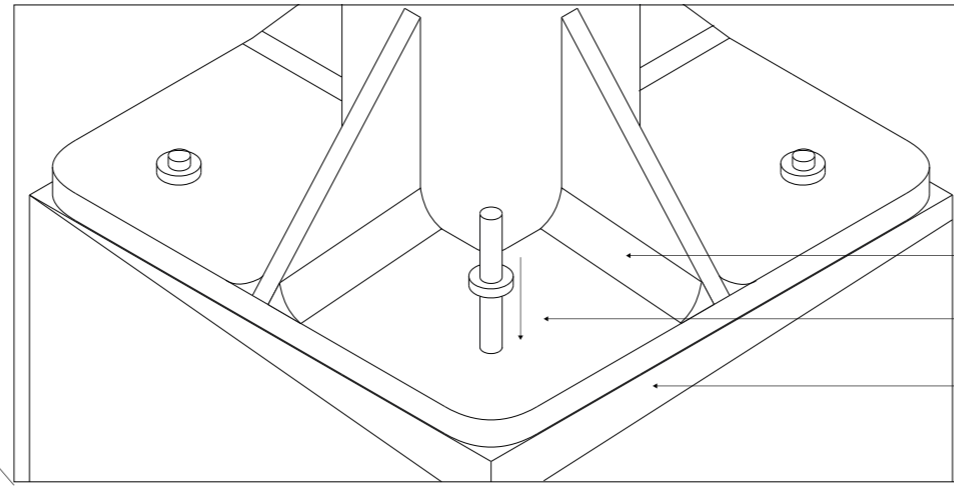
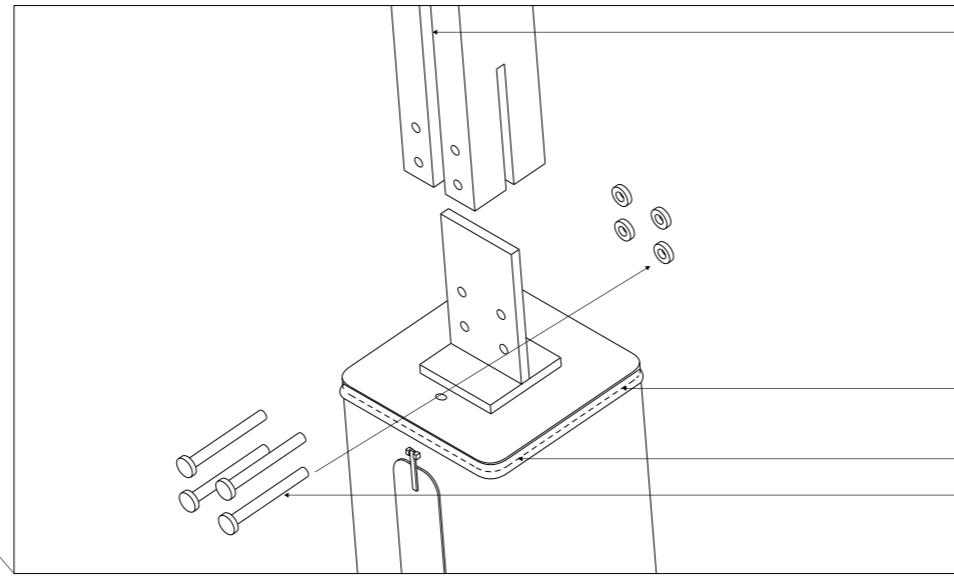
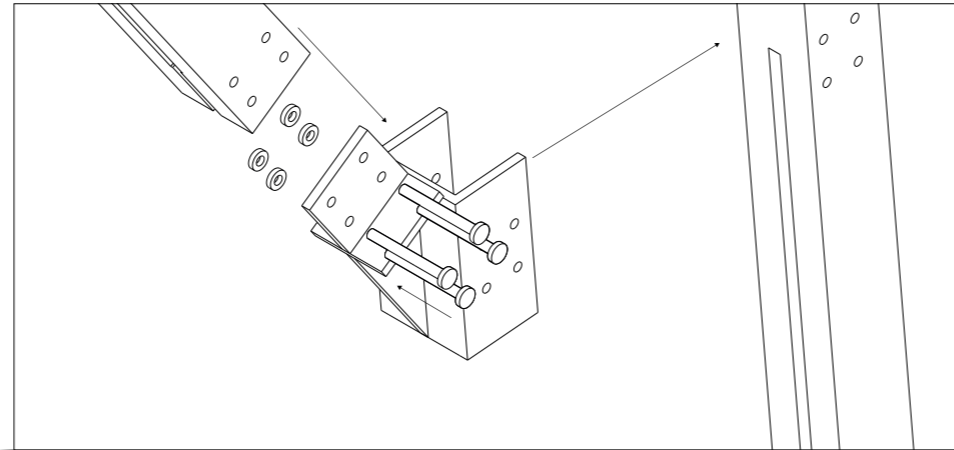
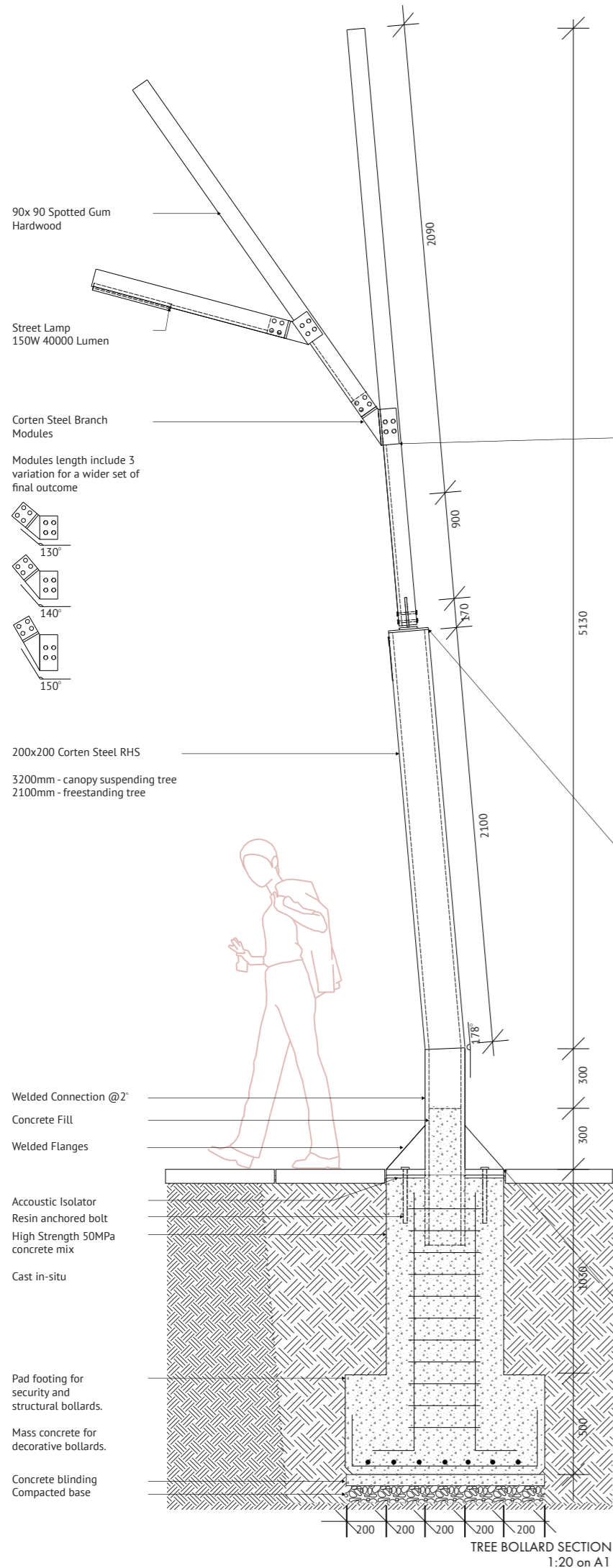


The shape also allows trees to serve as a canopy for the platform

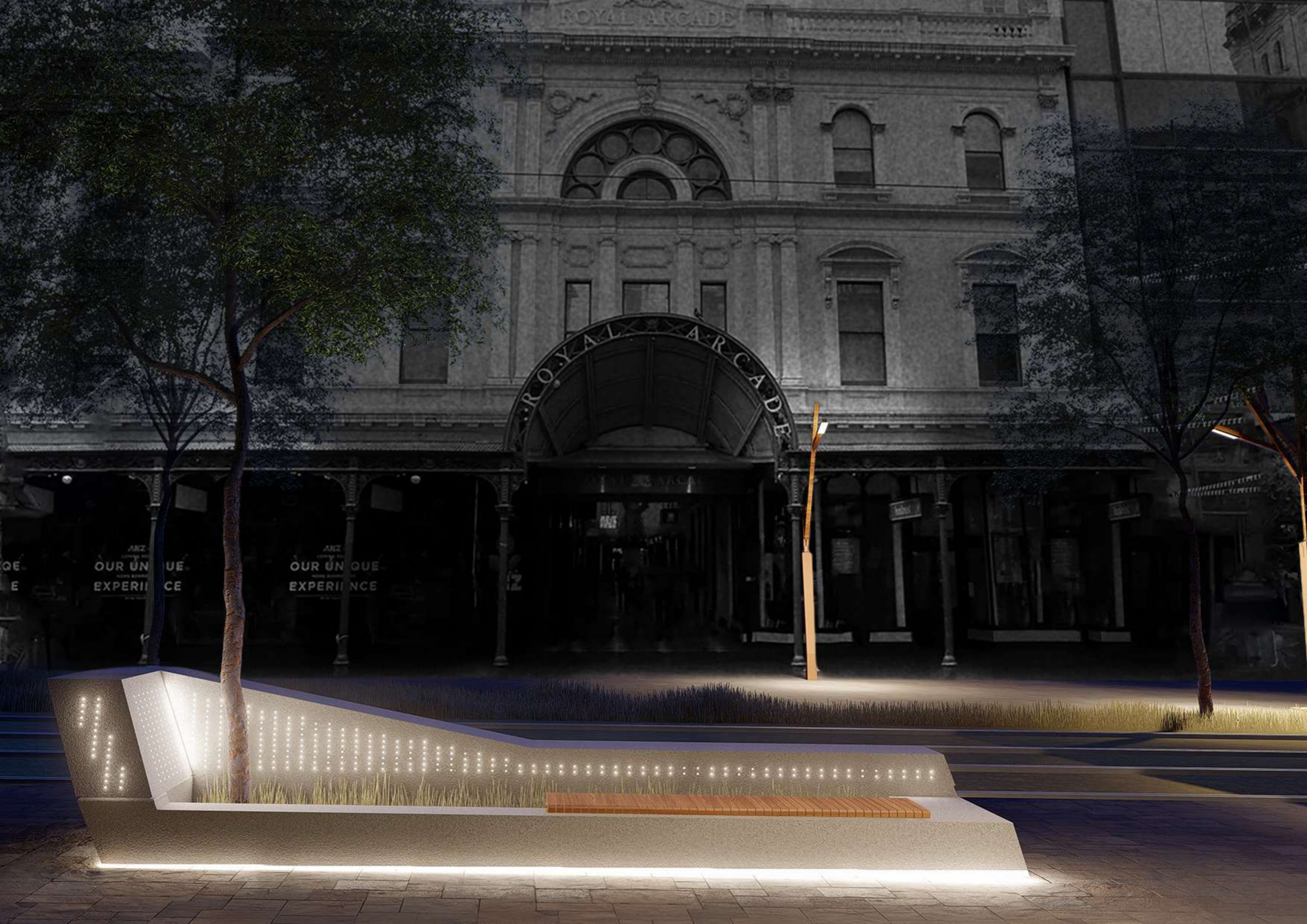
VARIATION  
1:20 on A1



# TREE BOLLARD



EXPLODED AXONOMETRY  
1:20 on A1



ROYAL ARCADE

ROYAL ARCADE

OUR UNIQUE EXPERIENCE

OUR UNIQUE EXPERIENCE

OUR UNIQUE EXPERIENCE